

MONTHLY MEMBERSHIP PROGRESS REPORT

District 33 A

Results as of: 5/31/2020

GMT:

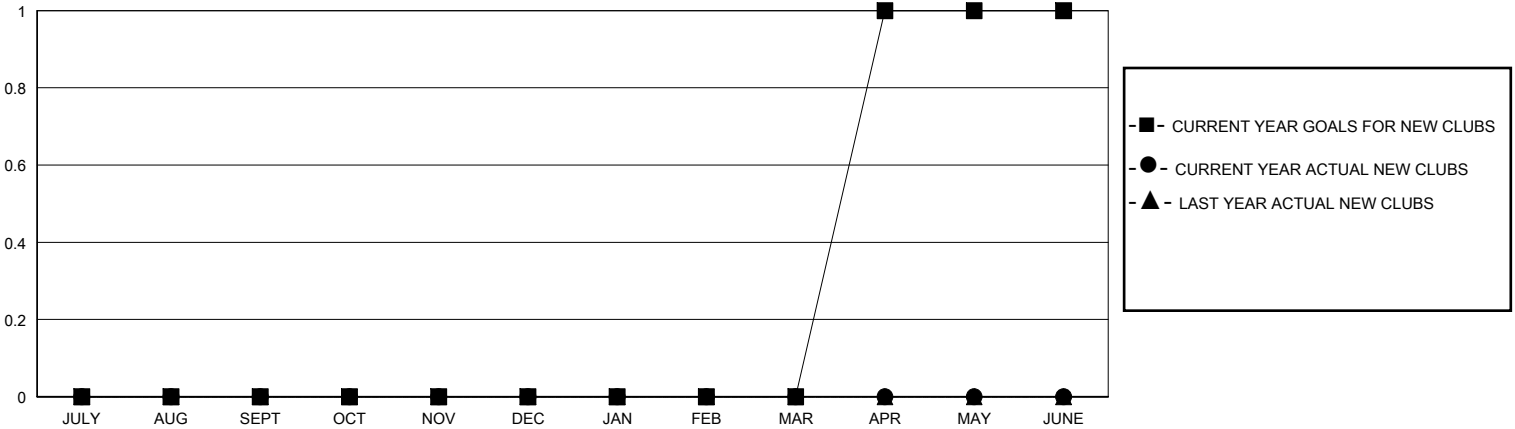
LOCATION MASSACHUSETTS

GMT CA

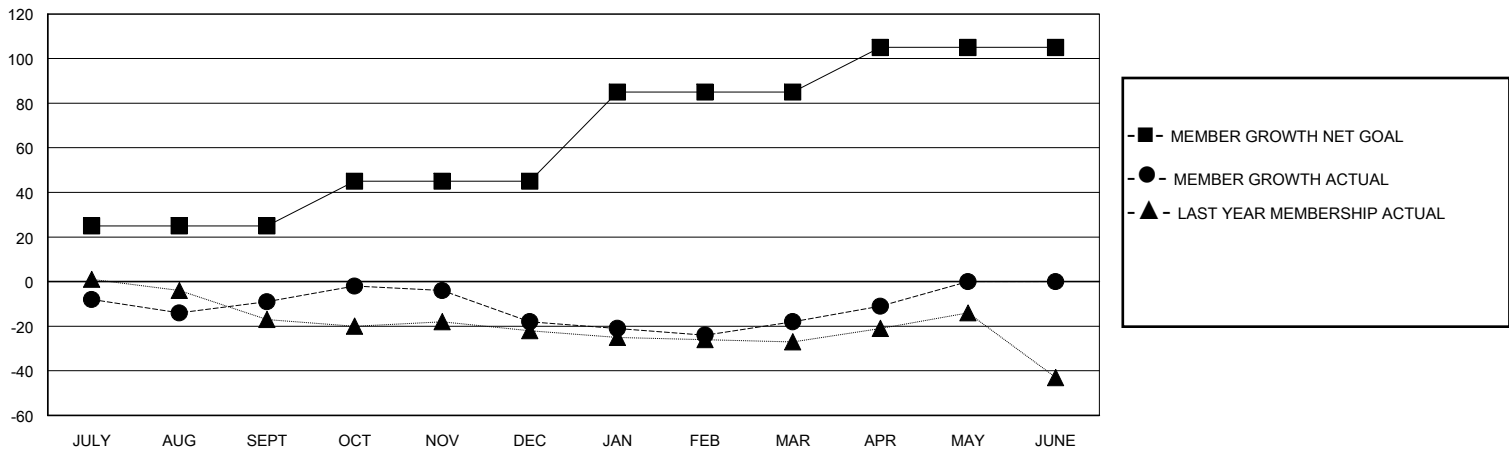
Clubs			
RESULTS FOR 2019-2020			
QUARTER	NEW CLUB GOAL	NEW CLUBS	DROPPED CLUBS
JULY/AUG/SEPT	0	0	0
OCT/NOV/DEC	0	0	1
JAN/FEB/MAR	0	0	0
APR/MAY/JUNE	1	0	0

Members			
RESULTS FOR 2019-2020			
QUARTER	MEMBER GROWTH NET GOAL	MEMBER GROWTH ACTUAL	DROPPED MEMBERS ACTUAL (including transfers)
JULY/AUG/SEPT	25	22	29
OCT/NOV/DEC	20	25	34
JAN/FEB/MAR	40	14	14
APR/MAY/JUNE	20	11	3

GOALS AND ACTUAL NEW CLUBS CUMULATIVE



GOALS AND ACTUAL MEMBERS CUMULATIVE



DROPPED CLUBS: 1

23 CLUBS OF 47 ADDED 1 OR MORE NEW MEMBERS

GENDER DISTRIBUTION

MALE 916 (66.09%)
FEMALE 470 (33.91%)

DROPPED MEMBERS

DECEASED	13
CLUB CANCELLED	4
OTHER	63
TOTAL	80

[CLICK HERE FOR CUMULATIVE MEMBERSHIP DATA](#)

TOTAL FAMILY UNIT MEMBERS	321
FAMILY MEMBERS PAYING HALF DUES	164